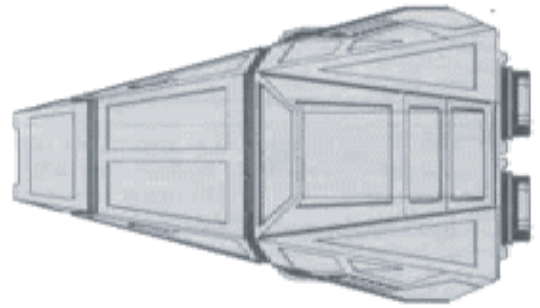
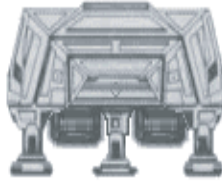
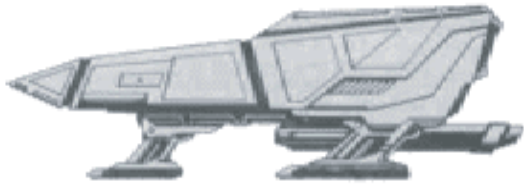


# RS-4 CLASS III RECON SCOUT



## CONSTRUCTION DATA:

Class - III  
 Model - A  
 Date Entering Service - 2265  
 Number Constructed - 78

## HULL DATA:

Superstructure Points - 10  
 Damage Chart - C  
 Size  
 Length - 70 m  
 Width - 26 m  
 Height - 10 m  
 Weight - 24,638 mt

## Cargo

Cargo Units - 12 SCU  
 Cargo Capacity - 600 mt  
 Landing Capacity - Yes

## EQUIPMENT DATA:

Control Computer Type - 1CG  
 Transporters -  
 Standard 9-person - 1  
 Combat 20-person - -  
 Emergency 25-person - 1  
 Cargo - 1

## OTHER DATA:

Crew - 36  
 Troops - -  
 Shuttlecraft - -

## ENGINEERING:

Total Power Units Available - 19  
 Movement Point Ratio - 2/1  
 Warp Engine Type - GWA-1  
 Number - 2  
 Power Units Available - 9  
 Stress Chart - Q/R  
 Max Safe Cruising Speed - Warp 7  
 Emergency Speed - Warp 8  
 Impulse Engine Type - GIB-1  
 Power Units Available - 1

## WEAPONS AND FIRING DATA:

Beam Weapon Type - GBL-4  
 Number - 2  
 Firing Arcs - 1 f/p, 1 f/s  
 Firing Chart - P  
 Maximum Power - 5  
 Damage Modifiers  
 +3 (1-6)  
 +2 (7-10)  
 +1 (11-12)  
 Torpedo Weapon Type - GP-3  
 Number - 1  
 Firing Arcs - 1 f  
 Firing Chart - O  
 Power To Arm - 2  
 Damage - 8

## SHIELD DATA:

Deflector Shield Type - GSF  
 Shield Point Ratio - 2/1  
 Maximum Shield Power - 10

## COMBAT EFFICIENCY:

D - 35.3  
 WDF - 10.9



## NOTES:

Known Sphere of Operation: Alliance Wide Use  
 Data Reliability: Class C  
 Major Data Source: Gorn Sector Intelligence